



彩钢瓦屋顶支架 (夹具型)

产品说明/DESCRIPTION:

- 安装位置/Installation place:
彩钢瓦屋面/Caigang watts roof
- 斜面支架组件/Module slop:
根据实际需求/According to the practical demand
- 拉拔力/Drawing force:
1000N
- 风力承载能力/Wind load:
40m/s、32.5kg/m²、13级
- 雪载承受力/Snow load:
70kg/m²
- 支架类型/Module type
框架/Frame
- 材料/Material:
铝型材/Aluminium profile
- 颜色/Colour:
本色/Natural
- 使用年限/Warranty time:
25 years.

本系统由以下零部件组成/This system consists of the following components:



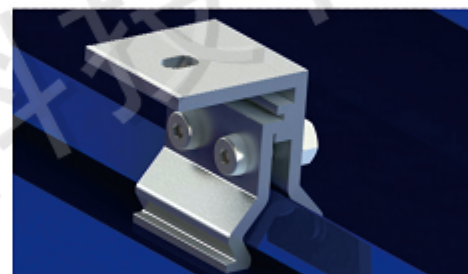
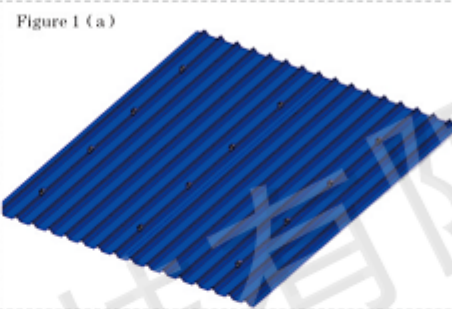
- 优势/ADVANTAGES:
1. 美观/Good Appearance.
 2. 简便易安装/Easy and flexible Installation.
 3. 多样化设计/Diversified Application.
 4. 重量轻/Light dead-weight.

工程实例照片



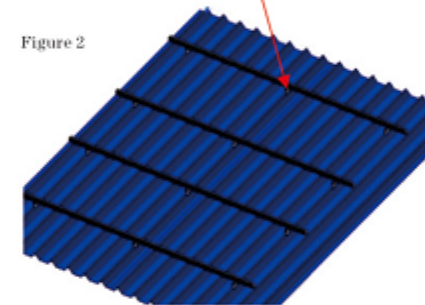
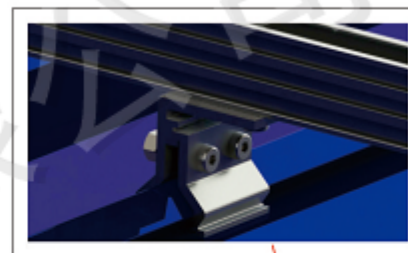
1 第一步/First step

The clamp is fixed on the steel tile bolt, as shown in figure 1:
将夹具用螺栓固定在彩钢瓦上, 如图1所示:



2 第二步/Second step

The rail with six hexagon bolts and nuts are fixed on the fixture block, as shown in figure 2:
将导轨用内六角螺栓与滑块螺母固定在夹具上, 如图2所示:



3 第三步/Third step

The component side pressing block and the middle block is fixed on the guide rail, as shown in figure 3:
将组件用边压块及中压块固定在导轨上, 如图3所示:

